


# EXHAUST CATALOG



**ROAD CHOICE**



We are committed to keeping trucks on the road and moving forward by providing quality parts to all who repair heavy-duty vehicles.

**CONFIDENCE.**  
**COVERAGE.**  
**COMMITMENT.**

---

# TABLE OF CONTENTS

<b>FLEX BELLOWS</b> .....	4
<b>CONNECTORS</b> .....	9
<b>ELBOWS</b> .....	13
<b>CLAMPS</b> .....	17
<b>RAIN CAPS</b> .....	22
<b>GUARDS</b> .....	23
<b>HANGERS</b> .....	25
<b>PIPES</b> .....	26
<b>FLEXIBLE TUBING</b> .....	31
<b>MUFFLERS</b> .....	35

## **DIDN'T FIND WHAT YOU'RE LOOKING FOR?**

We're equipped with a wide array of solutions to address your exhaust needs. If you don't find what you're looking for, feel free to send us an email to [info@roadchoice.com](mailto:info@roadchoice.com).

\*The cross reference information in this document is provided by several industry sources and our partners. While every attempt is made to ensure the information presented is accurate, we bear no liability due to incorrect or incomplete information. Please visit [roadchoice.com](http://roadchoice.com) for the latest information.



**Parts that keep you moving.  
Quality that keeps you coming back.**

---

# FLEX BELLOWS

**ROAD CHOICE® FLEX BELLOWS KITS** are designed to be used in pre-treatment exhaust applications for all classes and vocations of commercial trucks. All Road Choice bellows are compliant with EPA standards and meet the leakage requirements for applications between the turbo and the aftertreatment system.

Exhaust bellows are hydro-formed, highly flexible components that are designed to limit the stresses passed along to high-cost emission systems by absorbing displacements and vibrations in the exhaust system.

## FEATURES AND BENEFITS:

- 300 series stainless steel construction
- Zero leak rate exhaust bellows, including torsional bellows\*
- Up to 10 times the life expectancy of conventional flex hose assemblies
- Kits include everything needed for proper installation

Our flex bellow kits are an easy, cost-effective way to replace exhaust bellows. Kits include bellows, clamps and gaskets.\*

\*when necessary

\*leak rate on all aftermarket bellows is less than .5CFM at 4.5 PSI









# FLEX BELLOWS

PART NUMBER	BRAND	OE SERVICE PART NUMBER	DESCRIPTION	
FB2350981	Autocar	A2350981-001	Exhaust bellows kit 4" x 11.3"	
FB716131	Bluebird Bus	Q716131	Exhaust bellows kit 4" x 13.5" TORS	
FB28578	Freightliner	04-28578-000, A04-25922-018, A04- 26193-018	Exhaust bellows kit 4" x 16"	
FB28522	Freightliner	04-28522-000, A04-25022-018	Exhaust bellows kit 5" x 16.5"	
FB28675	Freightliner	04-28675-000	Exhaust bellows kit 5" x 16"	
FB25023	Freightliner	A04-25023-016	Exhaust bellows kit 4" x 16.5"	
FB27334	Freightliner	A04-27334-018	Exhaust bellows kit 5" x 18"	
FB26374	Freightliner	A04-26374-016	Exhaust bellows kit 4" x 16"	
FB27252	Freightliner	04-27252-000	Exhaust bellows kit 4" x 14"	
FB27254	Freightliner	04-27254-000	Exhaust bellows kit 4" x 29"	
FB28907	Freightliner	04-28907-000	Exhaust bellows kit 4" x 31"	
FB0330	Kenworth	M66-7064-0330	Exhaust bellows kit 4" x 13"	
FB3541	Kenworth	M66-3541	Exhaust bellows kit 4" x 12.6" TORS	

# FLEX BELLOWS

PART NUMBER	BRAND	OE SERVICE PART NUMBER	DESCRIPTION	
FB6559	Kenworth	M66-6559	Exhaust bellows kit 2.5" x 13.75"	
FB6660	Mack	23706660	Exhaust bellows kit 4" x 11.75" with bent tube bellows assembly	
FB8534	Mack/Volvo	21428534 21959393 22307701	Exhaust bellows kit 4" x 17.7"	
FB8536	Mack/Volvo	21428536 21959395 22307703	Exhaust bellows kit 4" x 17.7" TORS	
FB8532	Mack/Volvo	21428532 21959389 22307697	Exhaust bellows kit 5" x 15.9" TORS	
FB9373	Mack/Volvo	23789373	Exhaust bellows kit 4" x 23.34" with bent tube bellows assembly	
FB0336	Mack/Volvo	23790336	Exhaust bellows kit 4" x 22.08" with bent tube bellows assembly	
FB154C1	Navistar	3859154C1, 3846462C5	Exhaust bellows kit 4" x 13"	
FB159C1	Navistar	3859159C1	Exhaust bellows kit 4" x 52.6"	
FB462C5	Navistar	3846462C5 with pipe kit	Exhaust bellows kit 4" x 12"	
FB755C4	Navistar	3811755C4	Exhaust bellows kit 4" x 16.8"	
FB88C92	Navistar	4037288C92	Exhaust bellows kit 3.5" x 14"	
FB49C91	Navistar	3859149C91	Exhaust bellows kit 4" x 10"	

# FLEX BELLOWS

PART NUMBER	BRAND	OE SERVICE PART NUMBER	DESCRIPTION	
FB0320	Peterbilt	M66-7091-0320	Exhaust bellows kit 3.5" x 12.6"	
FB0335	Peterbilt	M66-7091-0335	Exhaust bellows kit 3.5" x 13.2"	
FB0405	Peterbilt	M66-7091-0405	Exhaust bellows kit 3.5" x 15.9"	
FB1403	Volvo	21051403	Exhaust bellows kit 5" x 12.15"	
FB3396	Volvo	21533396	Exhaust bellows kit 5" x 12.4"	
FB7699	Volvo	22307699	Exhaust bellows kit 4" x 15.2"	

# FLEX BELLOWS CROSS-REFERENCE

PART NUMBER	TRU-FLEX	FLEETRITE	ALLIANCE	AUTOMANN	TRP	DORMAN
FB2350981	6500419130000	FLTEBA419130	ABP N49 A2350981		EBAC19130	
FB716131	6500411882000	FLTEBB411882	ABP N49 BB716131		EBBB11882	674-6000
FB25023	6500411878000	FLTEBF411878	ABP N49 F25023		EBFL11878	674-6006
FB26374	6500411880000	FLTEBF411880	ABP N49 F26374		EBFL11880	674-6008
FB27252	6500411881000	FLTEBF411881	ABP N49 F27252		EBFL11881	674-6001
FB27254	6500413676000	FLTEBF413676	ABP N49 F27254		EBFL76003	674-6002
FB27334	6500511879000	FLTEBF511879	ABP N49 F27334	820.B46308P	EBFL11879	674-6009
FB28522	6500511876000	FLTEBF511876	ABP N49 F28522		EBFL11876	674-6005
FB28578	6500411875000	FLTEBF411875	ABP N49 F28578		EBFL11875	674-6007
FB28675	6500513574000	FLTEBF511877	ABP N49 F28675		EBFL13574	674-6003
FB28907	6500413819000	FLTEBF413819	ABP N49 F28907		EBFL19003	674-6004
FB154C1	6500411871000	FLTEBI411871	ABP N49 I154C1		EBNV11871	674-6014
FB159C1	6500413938000	FLTEBI413938	ABP N49 I159C1		EBNV38003	674-6015
FB462C5	6500411872000 6500412632000	FLTEBI411872 FLTEBI412632	ABP N49 I462C5 ABP N49 I462C5		EBNV11872 EBNV12632	674-6012
FB49C91	6500412536000	FLTEBI412536	ABP N49 I49C91		EBNV12536	
FB755C4	6500413322000	FLTEBI413322	ABP N49 I755C4		EBNV22003	674-6011
FB88C92	6500313825000	FLTEBI313825	ABP N49 I88C92		EBNV25003	674-6017
FB0320	6500311861000	FLTEBP311861	ABP N49 PB0320	820.B75320P	EBPB11861	674-6021
FB0330	6500411864000	FLTEBK411864	ABP N49 KW0330		EBKW11864	674-6020
FB0335	6500311862000	FLTEBP311862	ABP N49 PB0335	820.B75335P	EBPB11862	674-6022
FB0405	6500311863000	FLTEBP311863	ABP N49 PB0405	820.B75405P	EBPB11863	674-6023
FB3541	6500411865000	FLTEBK411865	ABP N49 KW3541		EBKW11865	674-6018
FB6559	6500211866000	FLTEBK211866	ABP N49 KW6559		EBKW11866	674-6019
FB1403	6500515268000	FLTEBV515268	ABP N49 V51403	820.B96403P	EBVL15268	674-6024
FB3396	6500517284000	FLTEBV517284	ABP N49 V33396	820.B96396P	EBVL17284	674-6029
FB7699	6500416816000	FLTEBV416816	ABP N49 V07699	820.B62699P	EBVL16816	674-6025
FB8532	6500511869000	FLTEBV511869	ABP N49 V28532		EBVL11869	674-6026
FB8534	6500411867000	FLTEBV411867	ABP N49 V28534	820.B96534P	EBVL11867	674-6027
FB8536	6500411868000	FLTEBV411868	ABP N49 V28536	820.B96536P	EBVL11868	674-6028
FB6660	6500428895000			820.B62660P		
FB9373	6500428895000			820.B62373P		
FB0336	6500427989000					

Visit [roadchoice.com](http://roadchoice.com) for the complete and latest cross-reference.



# CONNECTORS

## FLARED ADAPTERS O.D. X O.D.



PART NUMBER	SIZE	STYLE	FLARE	APPLICATION	USES CLAMP
XC405	4" x 5.5"	Flared Connector	45°	Cummins 250	XVC401
XC505	5" x 5"	Flared Connector	45°	Cummins	XVC507
XC506	5" x 3"	Flared Connector	20°	T-50 Turbo Charger	XVC501

## CONNECTOR TUBES I.D. X O.D.



PART NUMBER	STYLE	SIZE
XCE400	O.D. I.D. Straight Connector	4"
XCE500	O.D. I.D. Straight Connector	5"

---

# CONNECTORS

## CONNECTOR TUBES I.D. X I.D.



## CONNECTOR TUBES I.D. x I.D.

PART NUMBER	STYLE	SIZE
XCO350	I.D. I.D. Straight Connector	3.5"
XCO400	I.D. I.D. Straight Connector	4"
XCO500	I.D. I.D. Straight Connector	5"

## CONNECTOR TUBES I.D. x O.D.

PART NUMBER	STYLE	SIZE
XR435	I.D. O.D. Reducer	4" x 3.5"
XR540	I.D. O.D. Reducer	5" x 4"

# CONNECTORS

## CONNECTOR REDUCERS I.D. X I.D.



### CONNECTOR REDUCERS I.D. x I.D.

PART NUMBER	STYLE	SIZE
XRI540	I.D. I.D. Reducer	5" x 4"

### CONNECTOR REDUCERS O.D. x O.D.

PART NUMBER	STYLE	SIZE
XRJ540	O.D. O.D. Reducer	5" x 4"

### CONNECTOR REDUCERS O.D. x I.D.

PART NUMBER	STYLE	SIZE
XRO430	O.D. I.D. Reducer	3.5"
XRO435	O.D. I.D. Reducer	4"
XRO540	O.D. I.D. Reducer	5"

# CONNECTORS CROSS-REFERENCE

PART NUMBER	NELSON	RIKER	AP EXHAUST	DAYTON	DONALDSON	GRAND ROCK
XC405	89965K	AD405	9714	W41653	P207567	T450-6
XC505	89966K	AD505			J009393	T550-6
XC506	89967K	AD506	9478	W41655	P206615	T5886
XCE400	89166A	CE400	8991	W41896	P206369	CN-46A
XCE500	89167A	CE500		W41897	P206370	CN-56A
XCO350	89161A	CO350	14602	W41893	P206373	CP-358A
XCO400	89162A	CO400		W41895	P206374	CP-48A
XCO500	89163A	CO500		W41899	P206375	CP-58A
XR435	89172A	RO435	9332	W41991	P206327	R40-351A
XR540	89173A	OR540	9331	W41994	P206328	R50-41A
XRI540	89277A	RI540	8958	W41898	P206317	R5I-41A
XRJ540	89256A	RJ540		W41891	J009649	R50-40A
XRO430	89185A	OR430	9722		P206326	R4031A
XRO435	89186A	OR435	9332		P206327	R40-351A
XRO540	89187A	OR540	8965	W41909	P206323	R5I-40A

Visit [roadchoice.com](http://roadchoice.com) for the complete and latest cross-reference.

# ELBOWS

## ELBOW - 45° O.D. X O.D.



PART NUMBER	STYLE	DEGREE	LEG LENGTH	DIAMETER
XL40045SR	O.D. O.D. Aluminized Elbow	45°	12"	4"
XL50045SR	O.D. O.D. Aluminized Elbow	45°	8"	5"

## ELBOW - 45° I.D. X O.D.



PART NUMBER	STYLE	DEGREE	LEG LENGTH	DIAMETER
XL40045F	O.D. I.D. Aluminized Elbow	45°	8"	4"
XL40045	O.D. I.D. Aluminized Elbow	45°	12"	4"
XL50045F	O.D. I.D. Aluminized Elbow	45°	8"	5"
XL50045	O.D. I.D. Aluminized Elbow	45°	8"	5"

# ELBOWS

## ELBOW - 90° O.D. X O.D.



ALUMINIZED PART NUMBER	CHROME PLATED PART NUMBER	STYLE	DEGREE	LEG LENGTH	DIAMETER
XL400FNE		O.D. O.D. Elbow	90°	12"	4"
XL500SB		O.D. O.D. Short Radius Elbow	90°	5.5"	5"
XL500SR		O.D. O.D. Short Radius Elbow	90°	10"	5"
XL512NE	XL512NEC	O.D. O.D. Elbow	90°	15"	5"

# ELBOWS

## ELBOW - 90° I.D. X O.D.



PART NUMBER	STYLE	DEGREE	LEG LENGTH	DIAMETER
XL300F	O.D. I.D. Aluminized Elbow	90°	8"	3"
XL300	O.D. I.D. Aluminized Elbow	90°	14"	3"
XL488	O.D. I.D. Aluminized Elbow	90°	6"	4"
XL400F	O.D. I.D. Aluminized Elbow	90°	10"	4"
XL400	O.D. I.D. Aluminized Elbow	90°	18"	4"
XL510	O.D. I.D. Aluminized Elbow	90°	8.5"	4"
XL512	O.D. I.D. Aluminized Elbow	90°	10"	5"
XL500F	O.D. I.D. Aluminized Elbow	90°	15"	5"
XL600	O.D. I.D. Aluminized Elbow	90°	20"	6"

# ELBOWS CROSS-REFERENCE

PART NUMBER	NELSON	RIKER	ALLIANCE	AP EXHAUST	DAYTON	DONALDSON	GRAND ROCK
XL300	89102A	L300, L300F		9304	W42445	P206341	L390-1414A
XL300F	89101A	L300FS		8675		P206341	L390-1010A
XL400	89106A	L400	ABP N49 40EL90117A		W42937	P206345	L490-1818A
XL40045	89074A	L40045	ABP N49 40EL45104A		W42758	P206282	L445-0909A
XL40045F	89780A	L40045F			W41686	P206282	L445-0606A
XL40045SR	89782A	L40045SR			W41430	P207353	L445-0606SA
XL400F	89105A	L400F		9315	W41472	P206282	L490-1212A
XL400FNE	89116A	L400FNE			W41473	P206346	L490-1212SA
XL488	89923A	L488	ABP N49 40EL90118A	8681	W41378	J008681	L490-0808A
XL50045	89075A	L50045	ABP N49 50EL45106A	9317	W42855	J190027	L545-1212A
XL50045F	89781A	L50045F	ABP N49 50EL45106C	9417		J190025	L545-0808A
XL50045SR	89783A	L50045SR	ABP N49 50EL45205A	9559 ,9567		P207354	L545-0808SA
XL500F	89107A	L500F	ABP N49 50EL90120A	9554	W42858	P206347	L590-1515A
XL500SB	89097A	L500SB		9340	W41538	P206400	L590-0808SA
XL500SR	89096A	L500SR	ABP N49 50EL90243A		W41436	P207365	L590-1010SA
XL510	89924A	L510	ABP N49 50EL90123A	8680		P207339	L590-1010A
XL512	89784A	L512			W41532	P207339	L590-1212A
XL512NE	89117A	L512NE	ABP N49 50EL90244A	9541	W41436	P207331	L590-1212SA
XL512NEC	89117C	L512NEPL				J190019	L590-1212SC
XL600	89109A	L600		9310		P206350	L690-1313A

Visit [roadchoice.com](http://roadchoice.com) for the complete and latest cross-reference.



# CLAMPS

## CLAMP - ACCUSEAL



ALUMINIZED PART NUMBER	T430 BRIGHT STAINLESS STEEL PART NUMBER	STYLE	SIZE
XAC400	XAC400SS	AccuSeal Single Bolt Clamp	4"
	XAC500SS	AccuSeal Single Bolt Clamp	5"
XAC600		AccuSeal Single Bolt Clamp	6"

## CLAMP - EASYSEAL



STAINLESS STEEL PART NUMBER	STYLE	SIZE
XWC600	EasySeal Flat Band Clamp	6"

## CLAMP - TORCTITE PREFORMED LAP JOINT



ALUMINIZED PART NUMBER	STAINLESS STEEL PART NUMBER	STYLE	SIZE
XLC400*	XLC400SS*	TorcTite Lap Clamp	4"
XLC500*	XLC500SS*	TorcTite Lap Clamp	5"

\* Bulk ordering available in quantities of 50. Add BULK to the end of the part number.

# CLAMPS

## CLAMP - TORCTITE PREFORMED BUTT JOINT



ALUMINIZED PART NUMBER	STAINLESS STEEL PART NUMBER	STYLE	SIZE
XBC400		TorcTite Butt Clamp	4"
XBC500	XBC500SS	TorcTite Butt Clamp	5"

## CLAMP - GUILLOTINE, ROUND U-BOLT



ZINC PLATED PART NUMBER	CHROME PLATED PART NUMBER	STYLE	SIZE
XGC250		U-Bolt Guillotine Clamp	2.5"
XGC300		U-Bolt Guillotine Clamp	3"
XGC350		U-Bolt Guillotine Clamp	3.5"
XGC400	XGC400C	U-Bolt Guillotine Clamp	4"
XGC500	XGC500C	U-Bolt Guillotine Clamp	5"
XGC600		U-Bolt Guillotine Clamp	6"

# CLAMPS

## CLAMP - DOUBLE SADDLE WITH ROUND U-BOLT



PART NUMBER	STYLE	SIZE
XSC400	Unfinished Round U-Bolt Clamp	4"
XSC500	Unfinished Round U-Bolt Clamp	5"

ZINC PLATED PART NUMBER	CHROME PLATED PART NUMBER	STYLE	SIZE
	XFC400C	Heavy-Duty U-Bolt Clamp	4"
	XFC500C	Heavy-Duty U-Bolt Clamp	5"
XFC600	XFC600C	Heavy-Duty U-Bolt Clamp	6"

# CLAMPS

## V - BAND CLAMPS



ZINC PLATED PART NUMBER	STYLE	SIZE	APPLICATION
XVC400	V-Band Clamp	4"	Cummins L10, M11 CAT 3126T, 3176T
XVC401	V-Band Clamp Connector Ends	4"	
XVC411	V-Band Clamp	4"	Mack 48RU234I
XVC500	V-Band Clamp	5.25"	Detroit Diesel 8-71 (Special Manifold)
XVC501	V-Band Clamp	5"	Cummins T-50 Turbochargers
XVC507	V-Band Clamp Connector Ends	5"	

# CLAMPS CROSS-REFERENCE

PART NUMBER	NELSON	RIKER	ALLIANCE	AP EXHAUST	DAYTON	DONALDSON	GRAND ROCK
XLC400	90356A	TTA400	ABP N35 40PLA		W33969	J009606	PF-4A
XLC400SS	90366A	TTS400	ABP N35 40PLS		W33224	J009623	PF-4SS
XLC500	90358A	TTA500	ABP N35 50PLA		W33970	J009607	PF-5A
XLC500SS	90368A	TTS500	ABP N35 50PLS		W33225	J009624	PF-5SS
XGC250	89543K	U250		T212		P206405	RB-25ZN
XGC300	89545K	U300	ABP N35 300GCRS	T300	W35786	P206407	RB-3ZN
XGC350	89547K	U350	ABP N35 350GCRS	T312	W35787	P206409	RB-35ZN
XGC400	89548K	U400	ABP N35 400GCRS	T400	W35788	P206410	RB-4ZN
XGC400C	89548C	U400PL	ABP N35 400GCRC	9486	W35776	J009486	RB-4C
XGC500	89549K	U500	ABP N35 500GCRS	T500	W35789	P206411	RB-5ZN
XGC500C	89549C	U500PL	ABP N35 500GCRC			J009487	RB-5C
XGC600	89550K	U600		T600		P207667	RB-6ZN
XFC400C	89568K	UAF400PL	ABP N35 400UBFC	9492	W35776	P206610	FB-4C
XFC500C	89569K	UAF500PL	ABP N35 500UBFC		W35777	P206611	FB-5C
XFC600	89560K	UF600	ABP N35 600UBFZ	9506	W35693	P207596	FB-6ZN
XFC600C	89570K	UF600PL		9495	W35692	P207598	FB-6C
XVC400	89520K			9653		P222018	VB-475C
XVC411	89533K	UV401		9614		J009614	VB-461M
XVC500	90531K	UV500				J009647	
XVC501	89503K	UV501			W35806	P206607	VB-588C
XVC507	89514K	UV 507			W35500	P213191	VB-588C
XAC400	90875A	TAA400	ABP N35 A40AF			J000202	AS-4A
XAC400SS	90885A	TAS400				P238112	AS-4SSP
XAC500SS	90887A	TAS500				P238113	AS-5SSP
XAC600	90878A	TAA 600				J000209	GRE-AS6A
XBC400	90376A	TBA400				X006203	
XBC500	90378A	TTA500	ABP N35 50PLA	9682	W33970	P222750	EZ-5SS
XBC500SS	90388A	TBS500		9694		P222759	EZ-5SS
XWC600	89529K	TEC600	ABP N35 60EST	9388	W35980	J000218	EZ-6SS

Visit [roadchoice.com](http://roadchoice.com) for the complete and latest cross-reference.

# RAIN CAPS

## RAIN CAPS



ZINC PLATED PART NUMBER	CHROME PLATED PART NUMBER	STYLE	SIZE
XRC350		Rain Cap	3.5"
XRC400		Rain Cap	4"
XRC500	XRC500C	Rain Cap	5"
XRC600		Rain Cap	6"

## CROSS-REFERENCE

PART NUMBER	NELSON	RIKER	DONALDSON	GRAND ROCK
XRC350	89435A	RC350	P270538	RC-350
XRC400	89440A	RCG400	P270539	RC-400
XRC500	89450A	RCG500	P270541	RC-500
XRC500C	89450C	RC500PL	P270838	RC-500C
XRC600	89460A	RCG600	P270543	RC-600

Visit [roadchoice.com](http://roadchoice.com) for the complete and latest cross-reference.

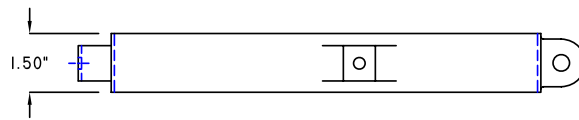
# GUARDS

## MUFFLER & PIPE GUARDS - 3/4 ROUND PATTERNS

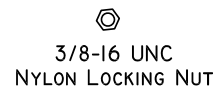


PART NUMBER	DESCRIPTION	SLOT PATTERN	SIZE	GUARD WRAP	LENGTH
MFG14SS	Muffler Guard	.75 Diameter Hole	8.5" - 10.13" Muffler	1/2	48"
MFG18SS	Pipe Guard	.75 Diameter Hole	4" - 5" Pipe	3/4	48"

## MOUNTING RING KITS - 3/4 GUARDS



- 14 GA. ALUMINIZED STEEL BAND
- (2) RING & HARDWARE PER KIT



PART NUMBER	DESCRIPTION
XMK1710	Muffler Heat Shield Clamp Kit - Use with MFG14SS guards

---

# GUARDS CROSS-REFERENCE

PART NUMBER	NELSON	RIKER	AP EXHAUST	DONALDSON	GRAND ROCK
XMK1710	89763K	SKA1710		P206512	MG-10270BRKT
MFG14SS	89749C	SP14SS		J009429	MG-10270RS
MFG18SS	89744C	SP13SS, SP18, SP1836SS, SP18SS, SP19SS	9458	P206543	PG448RS

Visit [roadchoice.com](http://roadchoice.com) for the complete and latest cross-reference.



# HANGERS

## UNIVERSAL HANGERS



PART NUMBER	DESCRIPTION	SIZE
XH100	Universal swivel hanger, use with u-type clamp	9.6"

## UNIVERSAL STACK PIPE HANGER



PART NUMBER	DESCRIPTION	SIZE
XMK600C	Stack Chrome Support Bracket	6"

## CROSS-REFERENCE

PART NUMBER	NELSON	RIKER	AP EXHAUST	DAYTON	DONALDSON	GRAND ROCK
XH100	89519K	UH100	8483	W35103	P206507	H-10
XMK600C	90598C	PB600PL	SB600			MB-6PBS

Visit [roadchoice.com](http://roadchoice.com) for the complete and latest cross-reference.

# PIPES

## SHORT TAILPIPES - O.D. INLET



ALUMINIZED PART NUMBER	CHROME PLATED PART NUMBER	STYLE	DIAMETER	LENGTH
XPA500	XPA500C	Curved Stack or Tail Pipe - OD	5"	18"

## SQUARE STACK PIPES - I.D. INLET



ALUMINIZED PART NUMBER	CHROME PLATED PART NUMBER	STYLE	DIAMETER	LENGTH
XPS35036		Straight Stack - ID	3.5"	36"
XPS40036		Straight Stack - ID	4"	36"
XPS40048		Straight Stack - ID	4"	48"
	XPS50024C	Straight Stack - ID	5"	24"
XPS50036	XPS50036C	Straight Stack - ID	5"	36"
XPS50048		Straight Stack - ID	5"	48"
XPS50060		Straight Stack - ID	5"	60"
XPS50072		Straight Stack - ID	5"	72"

# PIPES

## STANDARD TURN OUT STACK PIPES



ALUMINIZED PART NUMBER	CHROME PLATED PART NUMBER	STYLE	DIAMETER	LENGTH
XPA40024	XPA40024C	Curved Stack - OD	4"	24"
XPA40036	XPA40036C	Curved Stack - OD	4"	36"
	XPA40048C	Curved Stack - OD	4"	48"
	XPA50036C	Curved Stack - OD	5"	36"
XPA50048		Curved Stack - OD	5"	48"
XPA50060	XPA50060C	Curved Stack - OD	5"	60"
	XPA50072C	Curved Stack - OD	5"	72"
	XPA50084C	Curved Stack - OD	5"	84"
	XPA50096C	Curved Stack - OD	5"	96"

# PIPES

## STANDARD TURN OUT STACK PIPES



ALUMINIZED PART NUMBER	CHROME PLATED PART NUMBER	STYLE	DIAMETER	LENGTH
XP40024	XP40024C	Curved Stack - ID	4"	24"
XP40036	XP40036C	Curved Stack - ID	4"	36"
XP40048	XP40060C	Curved Stack - ID	4"	60"
	XP40072C	Curved Stack - ID	4"	72"
XP50024	XP50024C	Curved Stack - ID	5"	24"
	XP50036C	Curved Stack - ID	5"	36"
	XP50048C	Curved Stack - ID	5"	48"
	XP50060C	Curved Stack - ID	5"	60"
	XP50072C	Curved Stack - ID	5"	72"

# PIPES

## REDUCING STACK PIPES



CHROME PART NUMBER	STYLE	DIAMETER	LENGTH
XPA605048C	Curved Stack Bottom Reduced	6" x 5"	48"
XP60596C	Curved Stack - ID	6" x 5"	96"

# PIPES CROSS-REFERENCE

PART NUMBER	NELSON	RIKER	ALLIANCE	AP EXHAUST	DONALDSON	GRAND ROCK
XP40024	89055A	A40024		24746	J024746	K4-24EXA
XP40024C	89055C	A40024PL		24757	J024757	K4-24EXC
XP40036	89056A	A40036		34719	P208366	K4-36EXA
XP40036C	89056C	A40036PL		34746	J034746	K4-36EXC
XP40048	89057A	A40048		44664	P207295	K4-48EXA
XP40060C	89226C	A40060PL		54723	P207301	K4-60EXC
XP40072C	89985C	A40072PL		64673	P216202	K4-72EXC
XP50024	89058A	A50024		24747	J024747	K5-24EXA
XP50024C	89058C	A50024PL	ABP N49 40CS224C	24758	J024758	K5-24EXC
XP50036C	89059C	A50036PL	ABP N49 50CS236C	34747	P208375	K5-36EXC
XP50048C	89060C	A50048PL		44670	P207321	K5-48EXC
XP50060C	89227C	A50060PL			P207302	K5-60EXC
XP50072C	89988C	A50072PL	ABP N49 50CS172C	64672	P216205	K5-72EXC
XP60596C	90449C	A60596PL		884563	P216211	SK6-96EXC
XPA40024	89043A	AA40024	ABP N49 40CS224A	24748	J024748	K4-24SBA
XPA40024C	89046C	AA40024PL	ABP N49 40CS224C	24751	J024751	K4-24SBC
XPA40036	89044A	AA40036	ABP N49 40CS236A	34723	P208358	K4-36SBA
XPA40036C	89047C	AA40036PL	ABP N49 40CS236C	834728	P208359	K4-36SBC
XPA40048C	89045C	AA40048PL	ABP N49 40CS248C	44669	P206386	K4-48SBC
XPA500	89156A	AA500	ABP N49 50CS218A	24347	P208392	K5-18SBA
XPA50048	89045A	A40048	ABP N49 50CS248A	44665	P206382	K5-48SBA
XPA50060	89049A	AA50060	ABP N49 50CS260A		P208394	K5-60SBA
XPA50060C	89049C	AA50060PL	ABP N49 50CS260C		P208395	K5-60SBC
XPA50072C	89296C	AA50072	ABP N49 50CS272C	864001	P224600	K5-72SBC
XPA50084C	89297C	AA50084PL	ABP N49 50CS184C	874002	P211618	K5-84SBC
XPA50096C	89298C	AA50096PL		874001	P209912	K5-96SBC
XPA500C	89156C	AA500PL	ABP N49 50TS118C		P206385	K5-18SBC
XPA605048C	90568C	AA605048PL		54881		SK6-48SBC
XPS35036	89023A	SPO35036		34714	P208348	S35-EXA
XPS40036	89026A	SPO40036		34715	P208364	S4-36EXA
XPS40048	89027A	SPO40048		44656	P207287	S4-48EXA
XPS50024C	89028C	SPO50024PL		824006	J240024	S5-24EXC
XPS50036	89029A	SPO50036	ABP N49 40TS118A	34716	P208380	S5-36EXA
XPS50036C	89029C	SPO50036PL		340023	J340023	S5-36EXC
XPS50048	89030A	SPO50048		44658	P207292	S5-48EXA
XPS50060	89031A	SPO50060		54720	P207289	S560EXA
XPS50072	89920A	SPO50072		640012	J640012	S5-72EXA

Visit [roadchoice.com](http://roadchoice.com) for the complete and latest cross-reference.

# FLEXIBLE TUBING

Interlock flex tubing is specifically engineered for post-treatment exhaust applications in a wide range of commercial trucks, catering to various classes and vocations.

This innovative solution comprises a flexible metal hose, carefully spirally wound to create a robust and economical alternative for connecting rigid exhaust tubes. Its unique design enables it to accommodate minor misalignments within the system, ensuring seamless integration. Additionally, it effectively decouples motions that naturally arise during truck operation, guaranteeing enhanced durability and performance.



## GALVANIZED FLEX TUBING

Galvanized flex tubing is a highly durable hose that exhibits fair oxidation resistance. It is specifically engineered to withstand elevated temperatures of up to 600°F (316°C), making it ideal for a wide range of applications.

PART NUMBER	DESCRIPTION	TYPE
FLX40018G	4" x 18" Galvanized Flex Tube	Cut
FLX40024G	4" x 24" Galvanized Flex Tube	Cut
FLX40036G	4" X 36" Galvanized Flex Tube	Cut
FLX50018G	5" x 18" Galvanized .019 Flex Tube	Cut
FLX50024G	5" x 24" Galvanized Flex Tube	Cut
FLX50036G	5" x 36" Galvanized Flex Tube	Cut

## STAINLESS STEEL FLEX TUBING

Stainless flex tubing is meticulously engineered to deliver unparalleled durability, coupled with exceptional corrosion resistance. Crafted from high-quality stainless steel, this tubing is designed to withstand extreme temperatures, boasting an impressive tolerance of up to 1,200°F (649°C). Its robust construction ensures reliable performance even in the harshest environments, making it an ideal choice for a wide range of applications where both durability and resistance to corrosion are crucial.

PART NUMBER	DESCRIPTION	TYPE
FLX40018SS	4" x 18" Stainless Steel 304 Flex Tube	Cut
FLX40024SS	4" x 24" Stainless Steel 304 Flex Tube	Cut
FLX40036SS	4" x 36" Stainless Steel 304 Flex Tube	Cut
FLX50012SS	5" x 12" Stainless Steel 304 Flex Tube	Cut
FLX50018SS	5" x 18" Stainless Steel 304 Flex Tube	Cut
FLX50024SS	5" x 24" Stainless Steel 304 Flex Tube	Cut
FLX50036SS	5" x 36" Stainless Steel 304 Flex Tube	Cut

# BULK FLEXIBLE TUBING

## BULK TUBING

By purchasing tube in bulk, your fleet can benefit from cost savings while still maintaining the flexibility to customize the flange attachment according to their specific requirements. This approach allows for greater efficiency and cost-effectiveness in the long run, refer to the cutting procedures below for instructions on how to properly handle bulk tubing.



PART NUMBER	DESCRIPTION	MATERIAL
FLX400X10G	4" x 10' Flex Tube	Galvanized
FLX400X10SS	4" x .019" x 10' Flex Tube	Stainless Steel
FLX400X25G	4" x 25' Flex Tube	Galvanized
FLX400X25SS	4" x 25' Flex Tube	Stainless Steel
FLX500X10G	5" x 10' Flex Tube	Galvanized
FLX500X10SS	5" x .019" x 10' Flex Tube	Stainless Steel
FLX500X25G	5" x 25' Flex Tube	Galvanized
FLX500X25SS	5" x 25' Flex Tube	Stainless Steel
FLX600X10G	6" x 10' Flex Tube	Galvanized
FLX600X10SS	6" x 10' Flex Tube	Stainless Steel
FLX600X25G	6" x 25' Flex Tube	Galvanized
FLX600X25SS	6" x 25' Flex Tube	Stainless Steel
FLX350X25G	3.5" x 25' Flex Tube	Galvanized



---

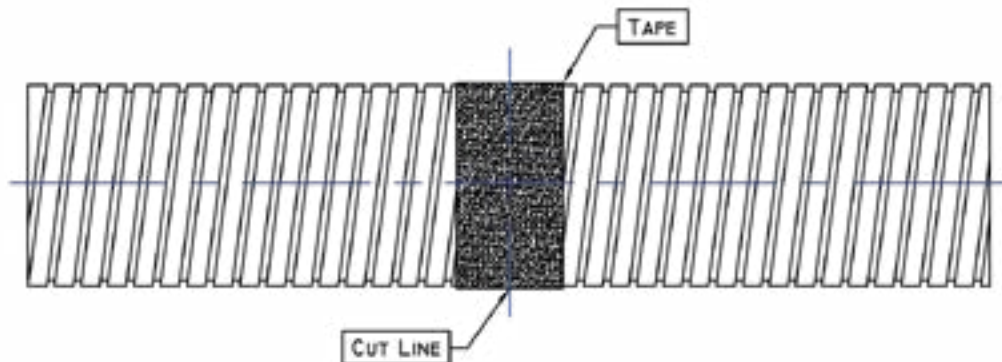
# BULK FLEXIBLE TUBING

## CUTTING PROCEDURES

To mitigate the issue of flexible tubing twisting and unraveling at cut ends, it is recommended to follow the following procedures while cutting:

- Measure and mark the desired length of tubing accurately.
- Wrap the intended cutting point of flex with standard 2" wide duct tape. The cutting point will be the middle of the taped area.
- Use a metal saw with a 24 or 32 tooth per inch saw blade such as a tube cutter or a fine-toothed saw, to ensure clean and precise cuts. Securely hold the tubing in place, preferably using a vise or clamps, to prevent unnecessary movement during the cutting process.
- After cutting, inspect the ends of the tubing for any fraying or uneven edges. If necessary, carefully remove any rough edges using a hand metal file.
- To maintain the tubing's diameter and prevent unraveling, it is advisable to install appropriate end fittings or connectors promptly.

By following these procedures, the risk of twisting, diameter changes, and other related issues can be minimized, ensuring optimal performance and longevity of the flexible tubing.



# FLEX TUBING CROSS-REFERENCE

PART NUMBER	DONALDSON	AUTOMANN	TRU-FLEX	ALLIANCE	GRAND ROCK	NELSON	RIKER	TRP	FLEXATUBE
FLX350X25G	P226154	562.U7235-25G	4211306004006	ABP N49 35FT25G					
FLX40018G	J024754	562.U7340-18G	4211406005017			89606K		EF4018G	
FLX40018SS	P206554	562.U7340-18SS304	4232405911047			89727K		EF4018S	
FLX40024G	J024835	562.U7340-24G	4211406005018			89607K			
FLX40024SS	J024836	562.U7340-24SS304	4232405911048			89728K		EF4024SL	
FLX40036G	J034743	562.U7340-36G	4211406005019						
FLX40036SS	J034673	562.U7340-36SS304	4232405911049			89729K		EF4036SL	46500
FLX400X10G	P226142	562.U7240-10G	4211406005007	ABP N49 4FT10G	G15-4120	89644K			
FLX400X10SS	P226146	562.U7240-10SS304	4232405911016			89624K	FTS4001910		
FLX400X25G	P226155	562.U7240-25G	4211406005009	ABP N49 4FT25G					
FLX400X25SS	P226156	562.U7240-25SS304	4232405911022						
FLX50012SS	J240007	562.U7350-12SS304	4232505913065			89730K		EF5012S	42500
FLX50018G	P206547	562.U7350-18G	4211506007014			90902K		EF5018G	33500
FLX50018SS	P206555	562.U7350-18SS304	4232505913066			89731K	SFC500X18.00	EF5018SL	48500
FLX50024G	J024837	562.U7350-24G	4211506007015			89610K		EF5024G	35500
FLX50024SS	J024838	562.U7350-24SS304	4232505913067			89732K	SFC500X24.00	EF5024SL	44500
FLX50036G	J034744	562.U7350-36G	4211506007016			89611K		EF5036G	39500
FLX50036SS	J034674	562.U7350-36SS304	4232505913068			89733K	SFC500X36.00	EF5036SL	46500
FLX500X10G	P226143	562.U7250-10G	4211506007007	ABP N49 5FT10G	G15-5120	89645K			
FLX500X10SS	P226147	562.U7250-10SS304	4232505913017			89625K	FTS5001910	EF50100S	
FLX500X25G	P226157	562.U7250-25G	4211506007009	ABP N49 5FT25G					
FLX500X25SS	P226158	562.U7250-25SS304	4232505913023			89724K		EF-50300SL	
FLX600X10G	P226150	562.U7260-10G	4211606008001						
FLX600X10SS	P226153	562.U7260-10SS304	4232605914016	ABP N49 6FT10S					
FLX600X25G		562.U7260-25G	4211606008003	ABP N49 6FT25G		89716K	FTG60019-25		
FLX600X25SS		562.U7260-25SS304	4232605914018	ABP N49 6FT25S		89725K	FTS 600 19 25		

Visit [roadchoice.com](http://roadchoice.com) for the complete and latest cross-reference.

# MUFFLERS



## STANDARD MUFFLER: TYPE 1

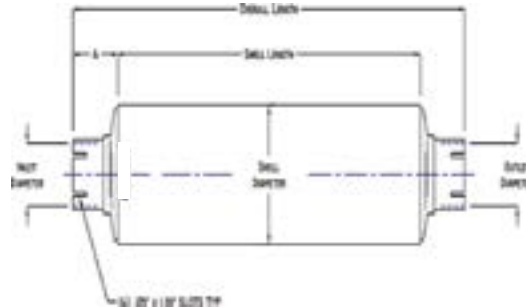
End In/Opposite End Out/Both on Center

PART NUMBER	INLET ID	OUTLET ID	BODY SIZE	BODY LENGTH	OVERALL LENGTH
MUF448533*	4"	4"	8.5"	34.4"	40"
MUF44944	4"	4"	9"	44.5"	52"
MUF45944	4"	5"	9"	44.5"	51"
MUF551044**	5"	5"	10.1"	44.5"	51"
MUF551044D***	5"	5"	10.1"	44.5"	51"

\* Mack R Models

\*\* Economy Muffler

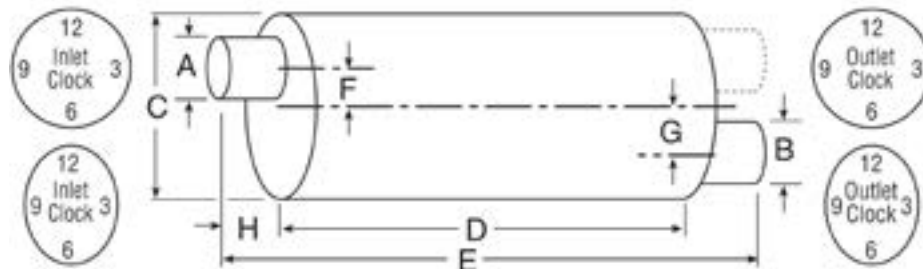
\*\*\* Better Noise Control



## TYPE ONE RESONATORS

PART NUMBER	INLET ID	OUTLET ID	BODY SIZE	BODY LENGTH	OVERALL LENGTH
MUF55910R	3"	1/3"	9"	11.5"	16"

# MUFFLERS

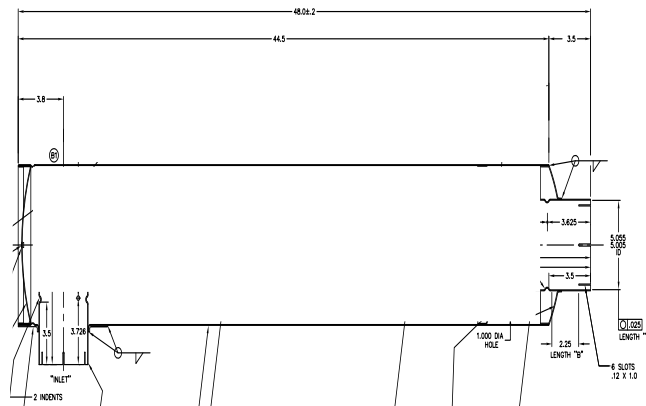


## STANDARD MUFFLER: TYPE 2

End In/Opposite End Out/Both on Off Set

Part Number	ID Inlet	ID Outlet	Shape	Body Length	Overall Length
MUF35481132*	3.5"	4"	8.3" X 11.5"	32"	36.3"

\* Most Popular - Navistar



## STANDARD MUFFLER: TYPE 5

Side In/End Out

Part Number	ID Inlet	ID Outlet	Body Size	Body Length	Overall Length
MUF4S59444	4"	5"	9"	44.5"	48"

# MUFFLER CROSS-REFERENCE

PART NUMBER	MACK/ VOLVO	NELSON	RIKER	AP EXHAUST	DAYTON	DONALDSON	GRAND ROCK
MUF35481132		86536M	84355	3716	22551	M090680	M-536
MUF448533	25086103 25181849	86127M	85901	3625		M085171	M-127
MUF44944	23001-0040 25181514 2ME373	86108M	90916	3666	W22809	M090544	M-131
MUF45944	2ME3102 2ME3118AP2 25164975	86514M	90945	3712		M090781	M-514
MUF4S5944	2ME3118A 25195320 25174614	86771M	90918	3926		M090823	M-771
MUF551044	3946780	86682M	M5010		W22920	M100465	M-465
MUF551044D	20814945 3970714 23001-3430 23001-0080 2ME135	86531M	10029	3723		M100580	M-130
MUF55910R	2ME29301P21 25044300	86145M	9LT500	3682		M090072	M-145

Visit [roadchoice.com](http://roadchoice.com) for the complete and latest cross-reference.



**ROAD CHOICE**

© 2024 Road Choice – All Rights Reserved.  
RCOEX-24CAT-052924