


MIRRORS CATALOG



ROAD CHOICE[®]
TRUCK PARTS



We are committed to keeping trucks on the road and moving forward by providing quality parts to all who repair heavy-duty vehicles.

CONFIDENCE.
COVERAGE.
COMMITMENT.

WEST COAST MIRRORS

ROAD CHOICE® MIRRORS provide you confidence on the road! Backed by a one-year warranty, the Road Choice mirrors product line provides west coast style and convex mirrors for your convenience.

WEST COAST MIRRORS FEATURES AND BENEFITS

- 2010 west coast mirror offers the widest viewing area available
- Larger glass 2010 mirrors feature over 106 square inch viewing area
- Designed to fit any standard 17 ½" span loop
- Replaceable ⅛" FSC mirror glass
- 4 amp, temperature-controlled heating element provides quick, even defrosting and prevents mirror glass from overheating
- Polished 300 series stainless steel outer shell and heavy-duty ABS plastic inner housing combine to ensure durability and good looks
- Mounting hardware included



REMOTE 2010 MIRROR FEATURES

- Heavy-duty, 1.5 RPM motor for fast, smooth adjustments
- Sealed motor housing for protection against moisture and contaminants
- Automatic slip clutch for manual adjustments without gear damage
- Interchangeable wire harness allows for convenient retrofitting

LEFT PART NUMBER	RIGHT PART NUMBER	M/R	HEAT
MIR8209WC	MIR8210WC	Manual	Yes
MIR8211WC	MIR8212WC	Remote	Yes

WEST COAST MIRRORS

7" X 16" V-BACK MIRROR

- Over 96 square inches of viewing area
- Comes as stainless steel with $\frac{5}{16}$ " hardware
- Cost effective mirror for high replacement applications
- Gasket surrounds silvered glass for durability and edge shock protection
- Glass not replaceable
- Standard painted finish
- Plated hardware



PART NUMBER	SIZE	DESCRIPTION	COLOR	FLAT GLASS/CONVEX GLASS AREA (IN ²)
MIR5112WC	7" x 16"	Standard glass	Stainless steel	96

ANGLE BACK MIRRORS

- Designed with $\frac{1}{8}$ " silvered glass and $\frac{5}{16}$ " - 18 plated hardware. Mounting fasteners are included.



ANGLE BACK - ROUND CORNER

PART NUMBER	SIZE	DESCRIPTION	COLOR	FLAT GLASS/CONVEX GLASS AREA (IN ²)
MIR5333WC	7" x 16"	Standard glass	Stainless steel	93
MIR5335WC	7" x 16"	Heated glass	Stainless steel	93
MIR8331WC	7" x 16"	Heated w/ marker light	Stainless steel	93

ANGLE BACK - SQUARE CORNER

PART NUMBER	SIZE	DESCRIPTION	COLOR	FLAT GLASS/CONVEX GLASS AREA (IN ²)
MIR8526WC	7" x 16"	Standard glass	Stainless steel	99
MIR8525WC	7" x 16"	Heated glass	Stainless steel	99
MIR5108WC	6.5" x 16"	Heated w/ marker light	Stainless steel	84

ANGLE BACK - ALUMINUM ECONOMY

PART NUMBER	SIZE	DESCRIPTION	COLOR	FLAT GLASS/CONVEX GLASS AREA (IN ²)
MIR5038WC ¹	6" x 16"	Standard glass	Aluminum	94
MIR5111WC ²	6" x 16"	Standard glass	Aluminum	94

NOTES: 1 - Includes black plastic end caps. 2 - Includes heavy-duty metal end caps.

CONVEX MIRRORS

BLIND SPOT CONVEX MIRRORS

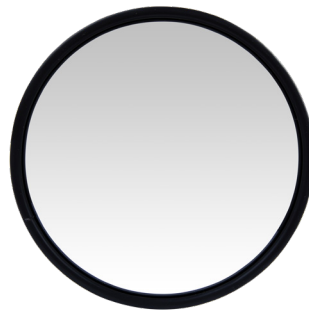
DURABALL CONVEX

- The DuraBall® mirror and pivot system features a HD nylon inner and outer ball with stainless bolt and locking "L" bracket

Helpful Hint: Mirror head diameter and ROC (radius of curvature) help determine field of view coverage and image size provided by the convex mirror. Wide view convex mirrors are typically used for front and rear cross view applications where a wide field of view is desired. Standard convex mirrors are used for viewing targeted blind spots or passing lanes around the vehicle.

THREE SCREW AND SPECIALITY CONVEX MIRRORS

- Three screw ball stud offers secure mounting and easy adjustment
- Available in high luster stainless steel, chrome plated steel or painted steel finishes
- 8 ½", 7 ½", 6" and 5" diameters with standard convex and heated options. The 8 ½" and 7 ½" are also available either center mount or offset mount
- Includes mounting "L" bracket, mounting hardware and comes in a display box



	DURABALL CONVEX LENS		THREE SCREW AND SPECIALTY LENS	
DESCRIPTION	WIDE VIEW CONVEX	STANDARD GLASS	HEATED GLASS	
8 ½" Center Mount				
Stainless Steel	MIR8448C	MIR8760C	MIR8762C	
Black		MIR8503C		
8 ½" Offset Mount				
Stainless Steel		MIR8761C	MIR8763C	
7 ½" Center Mount				
Stainless Steel		MIR8509C		
6" Center Mount				
Stainless Steel		MIR8515C		
5" Center Mount				
Stainless Steel		MIR8520C		

CROSS-REFERENCE

PART NUMBER	ALLIANCE	AUTOMANN	CHAM-CAL	RETRAC	GROTE	SUREPLUS
MIR5038WC	ABP N74B 20100	563.9012	20200	610278 601292	16244	7000
MIR5108WC	ABP N74B 20131	563.9015	20131		16063	
MIR5111WC	ABP N74B 20200		20100			7000
MIR5112WC	ABP N74B 20601	563.9091	20601	600807	16273	7300
MIR5333WC	ABP N74B 20301	563.9017	20301	601272 607002		7400
MIR5335WC	ABP N74B 20311	563.9028	20311	601285		7440
MIR8209WC	ABP N74B 20901		21231	607004		
MIR8210WC	ABP N74B 21002					
MIR8211WC	ABP N74B 21101		21101			
MIR8212WC	ABP N74B 21102					
MIR8331WC	ABP N74B 20331	563.9016 563.9081	20331	601288 607008		7430
MIR8448C	ABP N74B 10851		10891	610775		580
MIR8760C	ABP N74B 10801	563.9004	10801	604898 610673	12183	560
MIR8761C	ABP N74B 12801	563.9005	12801	608896 608898 604798 610551 610553		570
MIR8503C	ABP N74B 10803	563.9021	10803	610711 610713	12182	562
MIR8508C	ABP N74B 10701	563.9003	10701	604976 604978 610671		
MIR8509C	ABP N74B 12701	563.9031	12701	609836 609838		
MIR8515C	ABP N74B 10601	563.9002	10601	610191	12053	550
MIR8520C	ABP N74B 10501	563.9001	10501 13501	610146 610148	28033	530
MIR8525WC	ABP N74B 20711	563.9087	20111 20711	610306	16053	
MIR8526WC	ABP N74B 20701	563.9086	20101 20701	610301	16023	
MIR8762C	ABP N74B 10811	563.9084	10811		12283	564
MIR8763C	ABP N74B 12811	563.9085	12811			574



© 2021 Road Choice® Truck Parts – All Rights Reserved.
RCOMIR-21CAT